



# Elite & Girls Development Academy

PLAYER PACK - SEASON 2025/26



# CONTENTS

Vision & Mission	01
Training Centres	02
Coaching/Management Team	03
Staff Expectations	05
Ethos & Values	06
Training/Match Fee & Kit	07
Fixture Programmes	08
Player Reviews	09
Player Pathways	12
Kit Links & Contact Information	13



# Welcome to Wycombe Wanderers Elite/Girls Development Academy

---

## Our Vision

To be the leading football development programme outside of professional academy football, committed not only to excellence on the pitch, but also to shaping outstanding individuals off it.

## Our Mission

Our aim is to stretch and challenge every player, providing the environment and opportunities they need to reach their full potential, both on and off the pitch. Ultimately, we strive to progress at least two players each season into the WWFC Academy U18s and Women's First Team.



# Training Centres

## Elite Squad

Our elite squad is our top tier within our EDA set-up. It is a squad selected in order to stretch and challenge the players that are striving ahead and at the pinnacle of grass roots football.

**Tuesday's** - A&W College, Flackwell Heath, HP10 9HE - 17:15-19:00 - U9-U13

**Wednesday's** A&W College, Flackwell Heath, HP10 9HE - 18:30-20:00 - U14-U16

## Development Squad

Our development squad are a direct pathway into our elite squads. Our development squad aim to stretch and challenge some of the most talented grass roots players in order to reach their full potential.

**Monday's** - A&W College, Flackwell Heath - 17:15-19:00 - U9-U13

**Thursday's** - Burnham Football Club, Slough, SL1 8JG - 17:15-19:00 - U9-U13

**Friday's** A&W - College, Flackwell Heath - 17:15-19:00 - U6-U8

## Girls Development Academy

Our GDA was formed in order to provide the highest level of football provision outside of RTC football. It aims to provide a platform to players at the highest level of grass roots football and a pathway into our Wycombe Wanderers Women's set-up.

**Wednesday's** - A&W College, Flackwell Heath - 17:00-18:30 - U11-U15

**Friday's** - A&W College, Flackwell Heath - 17:15-19:00 - U8-U10





# Coaching/Management Team

## Management Team

**Kirk Williams** - Head of Performance & Pathways - [kirk.williams@wwfc.com](mailto:kirk.williams@wwfc.com)

**Lewis Bloom** - Elite Development Academy Manager - [lewis.bloom@wwfc.com](mailto:lewis.bloom@wwfc.com)

**Nick Hunt** - Female Football Development Manager - [nick.hunt@wwfc.com](mailto:nick.hunt@wwfc.com)

## EDA Coaching Team

**U6** - Janos Besenyei - Age Group Lead Coach (Full-Time) - [janos.besenyei@wwfc.com](mailto:janos.besenyei@wwfc.com)

**U7** - Lewis Bloom - Age Group Lead Coach (Full-Time) - [lewis.bloom@wwfc.com](mailto:lewis.bloom@wwfc.com)

**U8** - Ashley Lamb - Age Group Lead Coach (Full-Time) - [ashley.lamb@wwfc.com](mailto:ashley.lamb@wwfc.com)

**U9** - Kirk Williams (ELITE) - Age Group Lead Coach (Full-Time) - [kirk.williams@wwfc.com](mailto:kirk.williams@wwfc.com)

**U9** - Jason Carr (DEV) - Age Group Lead Coach (Full-Time) - [jason.carr@wwfc.com](mailto:jason.carr@wwfc.com)

**U10** - Janos Besenyei - Age Group Lead Coach (Full-Time) - [janos.besenyei@wwfc.com](mailto:janos.besenyei@wwfc.com)

**U11** - Ashley Lamb - Age Group Lead Coach (Full-Time) - [ashley.lamb@wwfc.com](mailto:ashley.lamb@wwfc.com)

**U12** - Brian Joseph - Age Group Lead Coach (Part-Time) -

**U13** - Daniel Moss - Age Group Lead Coach (Full-Time) - [daniel.moss@wwfc.com](mailto:daniel.moss@wwfc.com)

**U14** - Ashley Lamb - Age Group Lead Coach (Full-Time) - [ashley.lamb@wwfc.com](mailto:ashley.lamb@wwfc.com)

**U15** - Daniel Moss - Age Group Lead Coach (Full-Time) - [daniel.moss@wwfc.com](mailto:daniel.moss@wwfc.com)

**U16** - Brian Joseph - Age Group Lead Coach (Part-Time) -

**GK** - Charlie Lauri - Goalkeeping Lead Coach (Full-Time) - [charlie.lauri@wwfc.com](mailto:charlie.lauri@wwfc.com)

## GDA Coaching Team

**U8/9** - Jason Carr - Age Group Lead Coach (Full-Time) - [jason.carr@wwfc.com](mailto:jason.carr@wwfc.com)

**U10** - Nick Hunt - Age Group Lead Coach (Full-Time) - [nick.hunt@wwfc.com](mailto:nick.hunt@wwfc.com)

**U11** - Ashley Lamb - Age Group Lead Coach (Full-Time) - [ashley.lamb@wwfc.com](mailto:ashley.lamb@wwfc.com)

**U11** - Daniel Moss - Age Group Lead Coach (Full-Time) - [daniel.moss@wwfc.com](mailto:daniel.moss@wwfc.com)

**U12** - Janos Besenyei - Age Group Lead Coach (Full-Time) - [janos.besenyei@wwfc.com](mailto:janos.besenyei@wwfc.com)

**U13** - Jason Carr - Age Group Lead Coach (Full-Time) - [jason.carr@wwfc.com](mailto:jason.carr@wwfc.com)

**U14/15** - Brian Joseph - Age Group Lead Coach (Part-Time) -

**GK** - Charlie Lauri - Goalkeeping Lead Coach (Full-Time) - [charlie.lauri@wwfc.com](mailto:charlie.lauri@wwfc.com)



## EDA/GDA STAFF ROSTER



**KIRK WILLIAMS**  
Head of Performance



**LEWIS BLOOM**  
EDA Manager



**NICK HUNT**  
GDA Manager



**ASHLEY LAMB**  
Senior Delivery Officer



**DAN MOSS**  
Senior Delivery Officer



**CHARLIE LAURI**  
Senior Delivery Officer



**JASON CARR**  
Senior Delivery Officer



**JANOS BESENYAI**  
Delivery Officer



**BRIAN JOSEPH**  
Part Time Coach

# Expectations of Staff

## Coaching Responsibilities

All coaches are expected to uphold the following responsibilities as part of their role within the EDA/GDA programme:

- Ensure the safety and well-being of all players and staff at all times.
- Plan and deliver high-quality, progressive, and challenging training sessions, aligned with our EDA/GDA syllabus and overarching football philosophy.
- Select, tactically lead, and inspire their squads to perform at their highest level, consistently working within our established playing style and system.
- Contribute to a high-performance culture where players are encouraged to work hard, train with intensity, and adopt a champion's mentality.
- Help foster a team-first environment—‘we, not me’—where all staff and players consistently demonstrate respect, integrity, and professionalism toward one another and the opposition.



# Ethos & Values

## Expectations & Standards – The EDA/GDA Way

All players and staff are expected to uphold and embody the EDA/GDA philosophy, which is outlined in detail within this information pack.

By fully embracing and implementing the EDA/GDA approach playing the EDA/GDA way, we aim to be more than just the best footballing programme. We strive to be the hardest working, the most professional, and the most respectful team both on and off the pitch.

We expect every player and staff member to demonstrate, and expect from one another, a champion mentality, characterised by desire, resilience, respect, and integrity.

Our standards begin with ourselves. We place great importance on mastering the ‘World Class Basics’: being punctual, wearing the correct kit, following venue rules, and treating everyone with respect. These small details form the foundation of our high-performance culture.

Everyone involved in the EDA/GDA programme is a representative of the club and should take pride in wearing the badge. We expect all members to show the highest level of respect to the environment, to opponents, to match officials, and to each other.

Finally, we encourage a culture of positivity, support, and unity throughout the entire EDA/GDA family. Whether on the sidelines or on the pitch, in training or competition, we are one team. Only by working together can we achieve our collective goals.





# Training/Match Fees & Kit

## Training/Match Fee

As part of our 40-week training programme, we split our training blocks into two. Our first training block takes us from September to February and the final block from March to July, to link with our player review process. Our training and match fees are listed below;

- 105 minute session - £11.00
- 90 minute session - £10.00
- Match fee - £10.00

## Kit

Our WWF Hummel kit (as pictured below) is a mandatory part of being an EDA/GDA player for season 25/26.

**2024/25 kit can still be worn throughout this season.**

Please note that our EDA/GDA kit will be used for both training & match kit.

**Kit links will be distributed from September 2025.**



**Additional Kit Available**

# Fixture Programmes

## Fixture Programme & Grassroots Commitment

At Wycombe Wanderers Foundation, we believe in the importance of working collaboratively with the grassroots football community to help shape well-rounded young people and players.

To support this, our fixture programme is designed to run primarily during school half-term breaks. This approach allows our players to continue their footballing development with their junior clubs throughout the regular season, maintaining strong community ties and match exposure.

In addition, our Elite squads may occasionally be invited to participate in academy festivals or showcase fixtures on weekends. As these opportunities are limited and highly valuable, we strongly encourage players to make themselves available whenever possible to represent the programme.

These fixtures provide a fantastic platform for development, experience, and exposure, and we appreciate the support of players and families in making the most of them.

### EDA Fixtures Season 25/26 -

- October Half-Term (W/C 27th Oct) - VS Brentford (A)
- February Half-Term (W/C 16th Feb) - VS TBC (H)
- Xmas Fixtures (W/C 22nd Dec) - VS TBC (H)
- Easter Half-Term (W/C 30th March or 6th April) - VS Swindon Town (H)
- May Half-Term (W/C 25th May) - VS Northampton Town (H)

### GDA Fixtures Season 25/26 -

- October Half-Term (W/C 28th Oct) - VS Colchester United (H)
- February Half-Term (W/C 17th Feb) - VS Watford (H)
- Xmas Fixtures (W/C 22nd Dec) - VS TBC (H)
- Easter Half-Term (W/C 7th or 14th April) - VS Brentford (A)
- May Half-Term (W/C 26th May) - VS TBC



# Player Review & Retain / Release Process - EDA & GDA

Within both our EDA & GDA we are committed to supporting the continuous development of our players. As part of this commitment, we conduct formal player reviews four times per season — in November, February, April & July. These reviews are designed to complement the regular, real-time feedback players receive during weekly coaching sessions. The goal is to enhance each player's learning journey and provide structured, reflective insight into their progress.

The first stage of the review process involves the completion of a Player Performance Dashboard (NEW FOR 25/26), delivered in PDF format (below). This document evaluates player performance characteristics, overall performance, provides a player spotlight and also includes individual development plans.



The final stage of our review process is the player/parent review meeting. This meeting provides an opportunity for both the player and their parent to ask questions about the player's review and overall progress. It also allows the coaching team to offer deeper insights into the player's identified super strengths and key learning / development objectives.

These review meetings will replace training during an evening and will take place either online or Adams Park Stadium. Each review session will last a maximum of 12 minutes and will be conducted by the player's lead coach, accompanied by another member of our coaching staff. We aim for these conversations to be player-led, creating a supportive environment in which players feel confident and empowered to engage in discussions about their development and areas for future growth.

## Player Review & Retain / Release Process - EDA & GDA

At Wycombe Wanderers Foundation, we believe in consistent honesty and transparency. As such, it's important to highlight that not all EDA/GDA players will start and end their footballing journey's with us and potentially may not be invited to continue with us into season 2026–27 season. If this applies to you or your player, please rest assured that the outcome and communication process will be handled with care and professionalism, following the structure outlined below.

Our player review process is designed to provide clear and timely feedback. As part of this process, players identified as being at risk of not being retained for season 2026–27 will be informed during the quarter 1 or 3 (Nov/May) review. This stage is intended to provide early awareness and allow time for reflection and potential development, as well as gain an awareness of potential future options.

For players within EDA & GDA squads who are not being retained, we will first communicate with their parents. Parents will be informed of the decision and asked how they would prefer the outcome to be communicated to their player, with three options available for delivering this message:

- Parent-led approach: parents inform their player of the outcome, followed by a meeting with the lead coaches to provide further context, feedback, and guidance on next steps.
- Written communication: the club sends a formal letter to the player, after which a meeting is arranged with the lead coaches to discuss the decision and explore exit pathways.
- Direct meeting: a meeting is organised with the player and lead coaches to deliver the outcome in person, along with feedback and information on possible next steps.

We are committed to ensuring that all players, regardless of the outcome, are treated with respect and are supported throughout their journey (pre, during and post their time with Wycombe Wanderers Foundation).



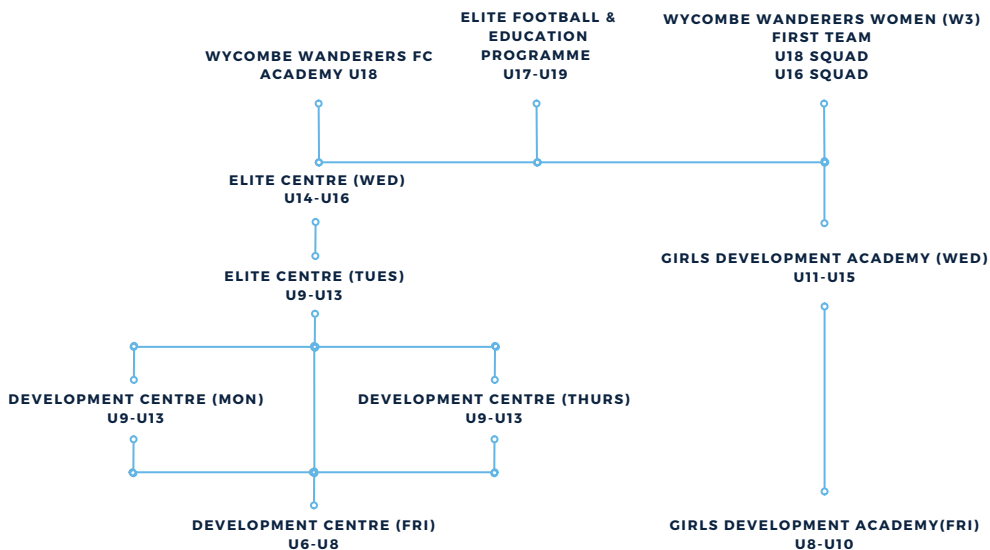
# Player Pathways

At Wycombe Wanderers Foundation we are pleased to share are ever expanding player pathway as we continue our aim of improving performance from ***“first kick to first team”***.

We are excited to continue our Elite Football & Education Programme (in association with The Henley College) as well as with Wycombe Wanderers Women (W3), please see links below for more information.

**Elite Football & Education Programme** - <https://shorturl.at/1Ye3C>

**Wycombe Wanderers Women (W3)** - <https://shorturl.at/mxyiN>





## Kit Links

Junior EDA/GDA Outfield Player Pack  
Junior EDA/GDA Goalkeepers Player Pack

FROM SEP 25  
FROM SEP 25

Adult EDA/GDA Outfield Player Pack  
Adult EDA/GDA Goalkeepers Player Pack

FROM SEP 25  
FROM SEP 25

Junior EDA/GDA Additional Kit  
Adult EDA/GDA Additional Kit

FROM SEP 25  
FROM SEP 25

Any questions regarding kit

[kirk.williams@wwfc.com](mailto:kirk.williams@wwfc.com)



# Connect With Us



**Socials**

@wwfcfdn



**Website**

wycombewanderersfoundation.co.uk



**E-mail**

community@wwfc.com



**Phone**

01494 455736